



City of Fairview “A City of History and Vision”

The City of Fairview, a small town in Northwest Oregon located outside of Portland, is a great place to do business and raise a family. The city was incorporated in 1908 and has historically been a farming and residential community. It is a city that prides itself on a quality of life that reflects small town values, while located in a major metropolitan area.

Fairview is an escape from the usual hustle and bustle of city life. The city is encompassed by breath taking surroundings and abundant recreational opportunities as it is situated within 1 hour of Mt. Hood and the Columbia River Gorge and within 2 hours of the Oregon Coast. The quality of life in Fairview is exceptional and its atmosphere exudes a small town charm.

General Information

Incorporation:	1908
County:	Multnomah
Population:	8,920 (2010 Census)
Land Area:	3.1 square miles
Zip Code:	97024
Nearest Major Highway:	I-84
Nearest Major City:	Portland, 15 miles

Income:

(American Community Survey 2005-2009)

Median Household Income:	\$55,100
Per Capita Income:	\$27,372
Median Home Value:	\$233,900

Distance to Major West Coast Cities

<i>City</i>	<i>Distance</i>
Portland, OR	15 miles
Salem, OR	60 miles
Medford, OR	287 miles
Vancouver, WA	18 miles
Tacoma, WA	150 miles
Seattle, WA	180 miles
San Francisco, CA	650 miles
Los Angeles, CA	976 miles



Fairview City Hall

Lifestyle Advantages - Excellent quality of life

The City of Fairview offers residents and visitors a high quality of life through many amenities and opportunities.

Housing Opportunities

- Desirable residential neighborhoods with diverse housing choices – executive, management and workforce housing options.
- Fairview Village – An award winning, pedestrian-friendly, and neo-traditional development with first class housing, retail and civic uses, and stunning parks.

Recreational Opportunities

Within Fairview:

- Gresham-Fairview Bike/Walking Trail with future connections to regional trails.
- Blue Lake Regional Park – Enjoy the expansive Blue Lake Park which offers a wide array of amenities including a swimming and play area, the Lake House (available for rental through Metro Parks), an intact and highly functioning wetland with viewing areas, and a 18 hole disc golf course.
- Chinook Landing Marine Park – This regional park offers easy access off of Marine Drive to boat launches and beaches along the beautiful Columbia River.
- Multiple neighborhood and pocket parks offering a range of amenities.



Blue Lake Regional Park



Blue Lake Regional Park

Just beyond our border:

- Columbia River Gorge Scenic Area: Multnomah Falls, Vista Falls, Bonneville Dam
- Rooster Rock State Park
- 6 public and private golf courses within 10 miles
- Within 1 hour of Mount Hood: opportunities for hiking, climbing, skiing, camping and snowboarding
- Under 2 hours from the Oregon Coast



View of Mt. Hood from across Fairview Lake

Cultural Opportunities

- Fairview Branch of the Multnomah County Library offers a wide array of activities for adults and youth.
- Within 15 miles of Portland, Oregon which offers a wide array of cultural opportunities including symphony, ballet, opera, theater, sporting events, theaters, as well as many others.

Community Events

- Annual Fairview on the Green
- Annual Flicks in the Park

Educational Opportunities

General

Reynolds School District

Fairview Elementary	Fairview	
Woodland Elementary	Fairview	
Salish Ponds Elementary	Fairview	
Multi-Sensory		
Learning Academy	Fairview	
Reynolds Middle	Fairview	
Reynolds High	Troutdale	3 mi.

Advanced

Mount Hood Community College	4 mi.
Portland Community College	15 mi.
Portland State University	15 mi.
Oregon Health Sciences University	15 mi.

Commitment to Public Safety

- Multnomah County Sheriff's Office

For more information visit our website at www.fairvieworegon.gov



Fairview-Columbia Public Library



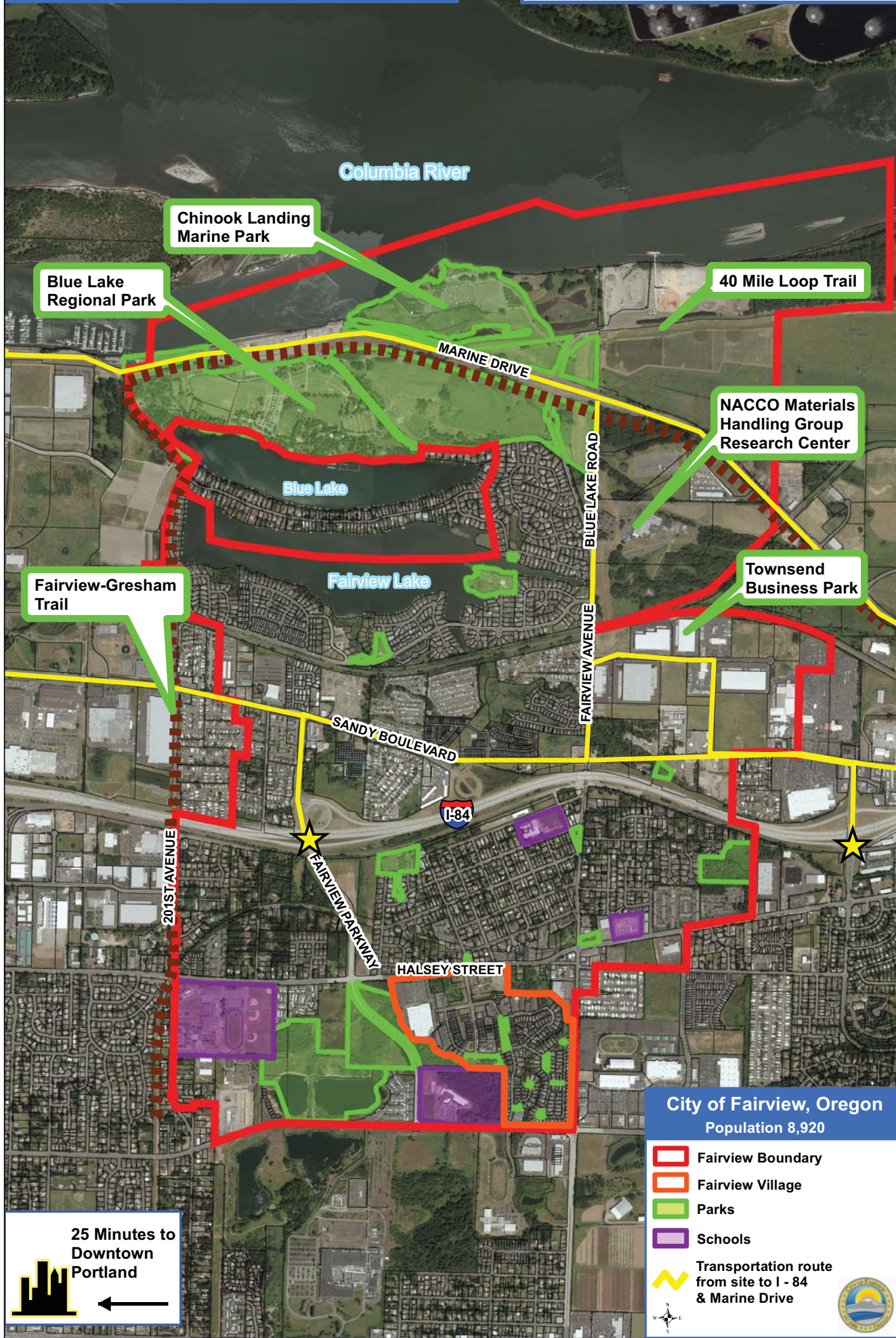
Fairview on the Green – Summer Festival



Fairview Community Park

15 Minutes to Portland International Airport

10 Minutes to Troutdale Airport



Chinook Landing Marine Park

Blue Lake Regional Park

40 Mile Loop Trail

NACCO Materials Handling Group Research Center

Fairview-Gresham Trail

Townsend Business Park

City of Fairview, Oregon
Population 8,920

- Fairview Boundary
- Fairview Village
- Parks
- Schools
- Transportation route from site to I - 84 & Marine Drive

25 Minutes to Downtown Portland

